



sembcorp

Sembcorp Myingyan Power Company Limited

**Annual Public Stakeholders Engagement
December 2020**



Objective

The purpose of today is to:

- Introduction
- Operational Phase
- Environmental and Social Updates
- Corporate Social Responsibilities Updates
- Grievance Committee



- ❖ You can ask questions/ raise your concerns during this meeting or provide feedback at the end of the meeting

Who are we? (1/2)

- Sembcorp Industries is a leading renewable, energy and water group with operations across 14 Countries in 4 continents worldwide.

1. Myanmar

2. Panama

3. Brazil

4. Chile

5. UAE

6. Oman

7. China

8. India

9. United Kingdom

10. Bangladesh

11. Philippines

12. Vietnam

13. Singapore

14. Indonesia



Who are we? (2/2)

- With facilities of over 12,600 megawatts of gross power capacity and over 8.6 million cubic meters of water per day in operation and under development, Sembcorp is a trusted provider of essential energy and water solutions to both industrial and municipal customers
- Myingyan IPP is the first international project financed Independent Power Producer (IPP) Project in Myanmar and is 100% owned by Sembcorp Myingyan Power Company Limited



Plant Location



- V Power 90 MW



- V Power 133 MW



- Sembcorp Myingyan IPP



- No.1 Steel Mill, Myingyan

Plant Overview



Project Facilities Overview



230 kV Transmission Tower



6.6kV Overhead Transmission Line



225MW CCGT



River Barge



Water Pipeline (Intake & Discharge)

Our role in Myanmar (1/2)

- Sembcorp Myingyan Power Company Limited has been selected by the Ministry of Electricity and Energy (MOEE) in 2015 to develop a 225MW Combined Cycle Gas Turbine (CCGT) power plant in Myingyan Township.
- The plant started Phase 1 commercial operation started on 7 May 2018 and full commercial operations started on 2 Oct 2018.



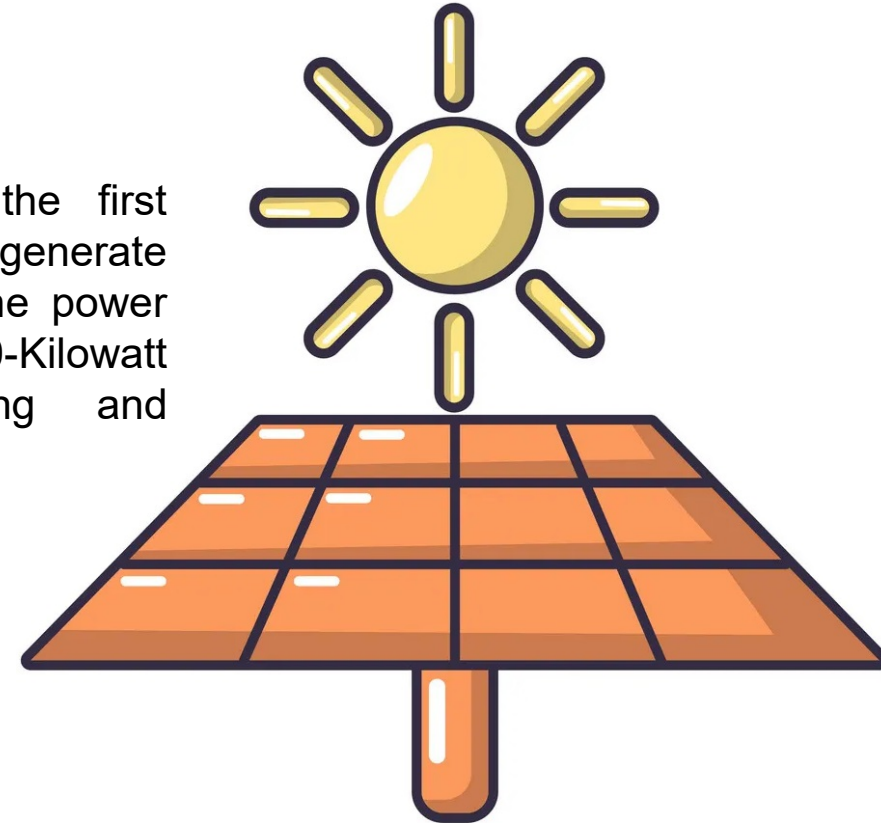
- The report on environment and social impacts has been undertaken by experts to understand potential environmental and social impacts and opportunities in accordance with national and international standards. Our ESIA has been approved by the Ministry of Natural Resources and Environmental Conservation (MONREC).

Our role in Myanmar (2/2)

- Sembcorp Myingyan IPP is a landmark Power Plant in Myanmar. Myingyan 225 MW Combine Cycle Power Plant is one of the largest and the most efficient Power Plant.



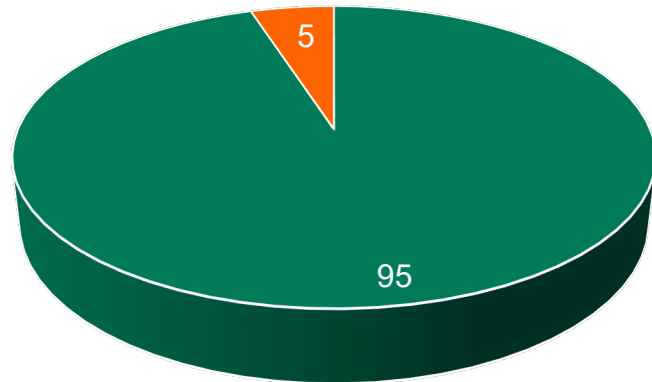
- Sembcorp Myingyan IPP is the first Power Plant in Myanmar which generate enough renewable energy to the power by Solar Panel more than 100-Kilowatt Peak entire Admin Building and Warehouse.



Job Opportunity (1/2)

- As of today, Sembcorp Myingyan Power Company
95 % Staffed by Myanmar National.

Employment



■ Myanmar National ■ Non-Myanmar National



Job Opportunity (2/2)

- Currently in the Operational Phase, the company will continue to uplift the livelihood of the community with training and community investments.



Environmental Management Plan

A. Air Quality Management



B. Noise Monitoring



C. Waste Management



D. Wastewater Management

Environmental Management Plan

(A) Air Quality Management (1/3)

The emissions by Myingyan project will be minimal. In addition, we have employed mechanisms to reduce and monitor our own emissions to ensure it is in line with the World Bank's existing requirements.

- ❖ Two air emission stacks – main and by-pass stacks of 40m and 30m height respectively were constructed to disperse air pollutants such that the ground level concentration of air pollutants do not exceed the relevant standards in the IFC EHS Guidelines for Thermal Power Plants (2008)
- ❖ Built-in dry low NOx burners reduce NOx emission at stack to below 25ppm at all times (Pic 1)
- ❖ Continuous Emission Monitoring System (CEMS) installed on BOTH GT Bypass Stack & Boiler Outlet Stack (Pic 2)
- ❖ Ambient air quality around the Plant area monitored as per the Environment Monitoring Programme formulated for the Plant (Pic 3)



Picture 1



Picture 2



Picture 3

Environmental Management Plan

(A) Air Quality Management (2/3)

Parameters	Values observed (third party monitoring results on Jun)	Myanmar Guideline Value	World Bank Guidelines Value	Unit	Rating
PM ₁₀	4.37	-	50	µg/m ³	
PM _{2.5}	2.09	-	25	µg/m ³	
*CO	0.0	-	9	ppm	
CO ₂	424.49	-	5000	ppm	
SO ₂	0.01	20	20	µg/m ³	
NO ₂	3.76	200	200	ug/m ³	
Noise Industrial, commercial	49.90	70	70	dBA	
Wastewater Discharge (pH)	8.04	6-9	6-9	S.U. ^a	
Total Suspended Solid	24	50	50	mg/l	
Oil and Grease	< 3.1	10	10	mg/l	
Wastewater Temperature Increase	0.4	< 3	-	°C	

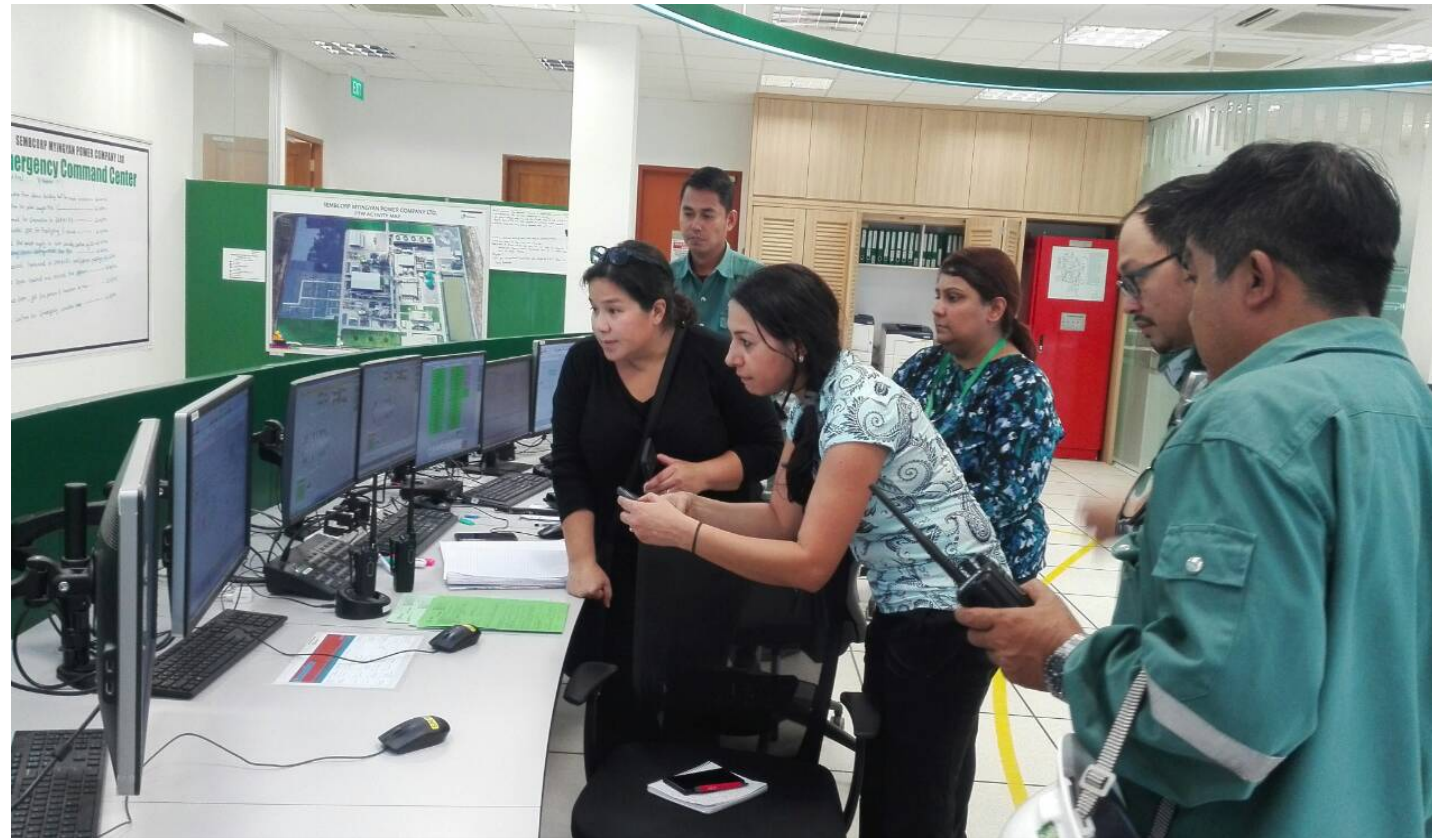
Compliance

Non-compliance

****National Environmental Quality emission guidelines 2015**

Environmental Management Plan

(A) Air Quality Management (3/3)



CEMS monitoring air quality parameter was inspected by World Bank Team during the annual audit

Environmental Management Plan

(B) Regular Noise Monitoring (external & internal) (1/2)

- ❖ Noise quality around the Plant area monitored as per the Environment Monitoring Programme formulated for the Plant (Pic 1)
- ❖ Noise inside the plant area also monitored by HSSE Team (Pic 2 & 3)



Picture 1



Picture 2



Picture 3

Environmental Management Plan

(B) Regular Noise Monitoring (external & internal) (2/2)

- ❖ Audio Metric Test by Ear, Nose and Throat Technician



Environmental Management Plan

(C) Waste Management (1/2)

- ❖ During the Operation and Maintenance Phase, domestic waste generated by the operations workforce (including paper, plastics and putrescible wastes) as well as waste materials such as steel, excess cables etc. associated with routine and non-routine maintenance will be stored and disposed of by an Authorized Collector.
- ❖ Both Hazardous and Non-hazardous waste will be collected & disposed of by a Myingyan City Development Committee (MCDC)-approved contractor.
- ❖ Hazardous waste (e.g. used oil) are recycled and refined. Medical waste is incinerated in the Myingyan Hospital compound.



Weekly housekeeping carried by team



Environmental Management Plan

(C) Waste Management (2/2)



****Sludge are disposed to the designated area which outside of Myingyan, beside of Myingyan – Nyaung U road (near by the OK hotel).**

Environmental Management Plan

(D) Wastewater Management (1/2)

- ❖ Liquid effluents arising from operations will be treated to the applicable IFC guideline prior to discharge. The sewage from the entire plant area will be collected and treated in a Sewage Treatment Plant (STP). No untreated sewage will be directly discharged into the Ayeyarwady River, or disposed of on land, for the duration of the project life cycle.
- ❖ Regular monitoring of wastewater quality will be conducted by internal & external parties. (Pic 1 & 2)
- ❖ Online sensors installed at Central Monitoring Basin for PH, Turbidity & Chlorine. (Pic 3)



Picture 1



Picture 2



Picture 3

Environmental Management Plan

(D) Wastewater Management (2/2)

- ❖ Wastewater collected from canteen kitchens, including that from basins, sinks and floor drains, will be discharged into sanitary sewers via grease traps. The sanitary sewer will then be treated prior to discharge or reuse as greywater.
- ❖ Regular monitoring of wastewater quality will be conducted by internal team at lab and discharged points. (Pic 1&2)



Picture 1



Picture 2

Emergency Response Plan

Designated Emergency Assembly Area



**Emergency
Assembly
Area (1)**

**Emergency
Assembly
Area (2)**

Emergency Response Plan

Preparedness for Fire Emergency

- ❖ Under the instruction of Myingyan Fire Service Department, Reserve Fire Fighting Team was formed to deal with a Water 5000 Liter and Foam 1500 Liter Capacity Fire Truck and Fire Safety Manager was trained by Government Fire Department.



Emergency Response exercise for in case of fire at Cooling tower



Fire fighting team performed fire truck inspection on weekly basic

Emergency Response Plan

Emergency Response Drill conducted regularly



Emergency Response exercise for in case of Chemical spillage



Emergency Response exercise for in case of fire at Water Treatment Plant – Fire truck mobilization



Emergency Response exercise for in case of fire at Water Treatment Plant – PERT Team mobilization



Debriefing of emergency drill exercise with PERT Team members

Emergency Response Plan

BCP information (1/3)



Ministry of Health, Myingyan authority inspected Covid19 preventive measure at plant. No issue was recommended.



The management team have prepared PPE and other facility for workers who involved in disinfection work.



According to Plant BCP for COVID-9, all workers are checked the body temperature at gate.



According to Plant BCP for COVID-19, all delivery drivers are checked and wear full PPE.

Emergency Response Plan

BCP information (2/3)

- ❖ All staff disinfect hands using the provided disinfectant at the CCR entrance and permit to work counter entrance before entering the control room and permit to work counter.



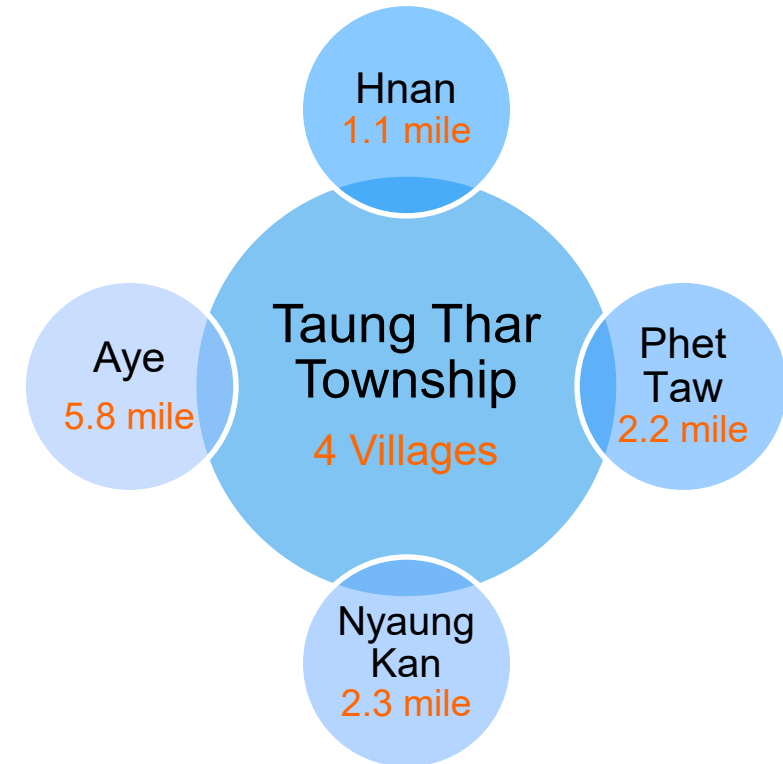
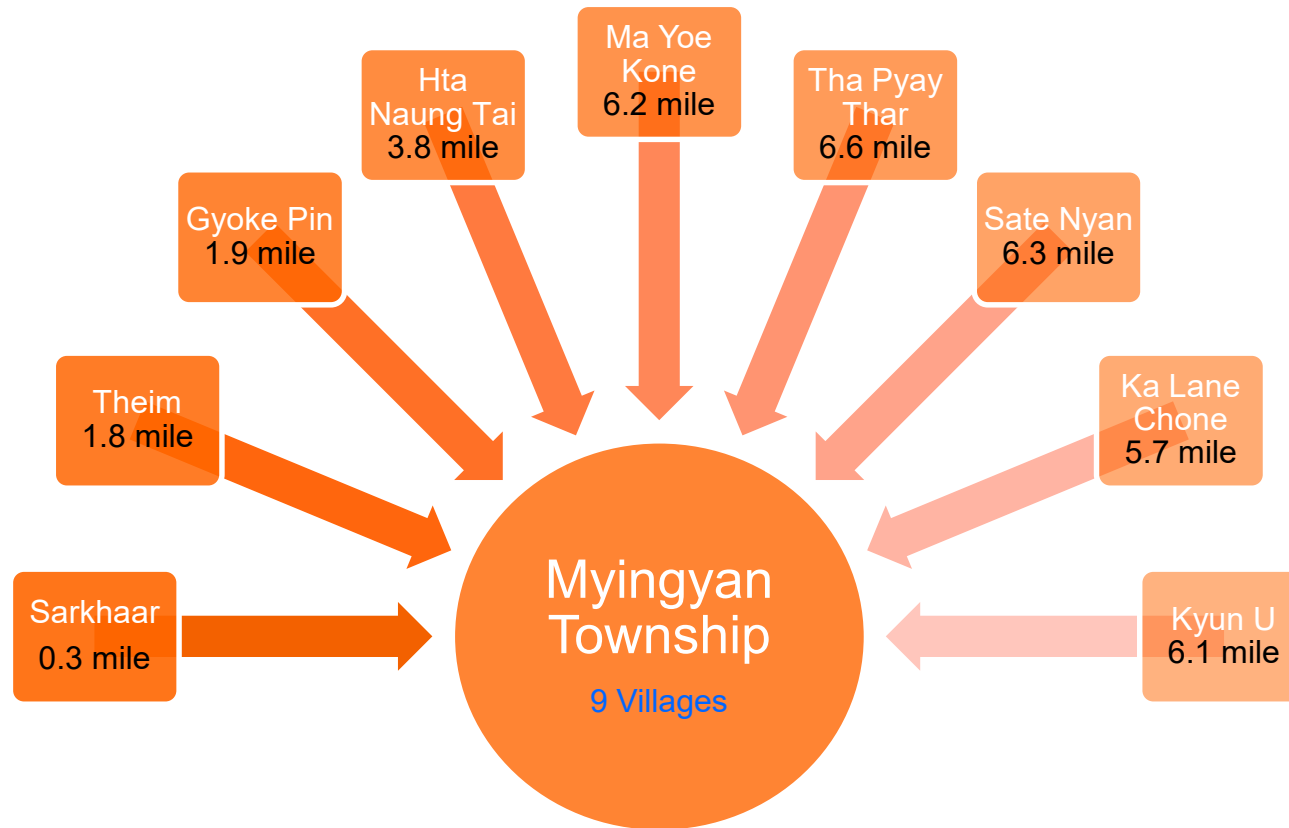
Emergency Response Plan

BCP information (3/3)

- ❖ All staff follow social distancing at all time(e.g. Central Control Room & Permit To Work Counter).



Our Community – 13 Villages



Corporate Social Responsibility

- ❖ Educational Support
- ❖ Community Health Awareness and Health Care Facilities
- ❖ Enhance Access to Ground Water
- ❖ Improve Community Infrastructure
- ❖ Social Welfare and Youth Development
- ❖ Only based on genuine needs (e.g. flood relief, poor existing infrastructure)



Corporate Social Responsibility

Educational Support



Corporate Social Responsibility

Community Health Awareness and Health Care Facilities



Corporate Social Responsibility

Enhance Access to Ground Water



Corporate Social Responsibility

Improve Community Infrastructure



Corporate Social Responsibility

Social Welfare and Youth Development



Corporate Social Responsibility

COVID-19 Support (1/2)

STOP
COVID -19



Corporate Social Responsibility

COVID-19 Support (2/2)



Supported **30kVA** generator to Myingyan District Hospital purpose to use COVID-19 treatments as well as others medical usage in hospital



Supported **100kVA** generator to Myingyan District Hospital purpose to use COVID-19 treatments as well as others medical usage in hospital

Corporate Social Responsibility

Ongoing Engagement (1/2)

- ❖ Public stakeholder meetings to be continued in annual basis.



Corporate Social Responsibility

Ongoing Engagement (2/2)

- ❖ Engagement will continue throughout the entire lifecycle of the Project.



Corporate Social Responsibility

Grievance Management

A Grievance Mechanism has been established to redress claims by affected individuals

- ❖ Available for anyone to report
- ❖ If you have any suggestion for improvement, issue or concerns, Sembcorp is happy to listen to them.
- ❖ Place it in suggestion boxes near your village or contact Sembcorp staff directly.
- ❖ Your village head is also part of the committee.



Corporate Social Responsibility

Grievance Committee

1. Respective Village Head
2. U Than Htut Aung – Asst: Director (EPGE – Government)
3. U Aung Lwin Oo – Development Manager
4. Daw Naing Naing Aung – Human Resources Manager
5. U Tin Maung Thein – HSSE Manager
6. Hein Min Oo @ Koyin – CSR Executive
7. Township Officer – General Administration Department (Optional)



Village Head (13 Villages)

- | | | |
|-------------------|---|-----------------|
| 1. Sarkhaar | - | U Maung Myint |
| 2. Hnan | - | U Hein Min Lwin |
| 3. Phet Taw | - | U Soe Htun |
| 4. Nyaung Kan | - | U Shu Maung |
| 5. Theim | - | U San Lwin |
| 6. Gyoke Pin | - | U Win Hlaing |
| 7. Hta Naung Tai | - | U Aye Ko |
| 8. Aye | - | U Myint Swe |
| 9. Ma Yoe Kone | - | U Win Maung |
| 10. Tha Pyay Thar | - | U Win Shwe |
| 11. Sate Nyan | - | U Chit Win |
| 12. Ka Lane Chone | - | U Zaw Khin |
| 13. Kyun U | - | U Kyaw Toe |

Contact Details

Comments, concerns, queries and questions are welcomed.

Sembcorp Myingyan Power Company Limited



Point of Contact : **Hein Min Oo @ Koyin**
Email Address : hein.minoo@sembcorp.com
Phone : +95 9 43164626

Point of Contact : **Thant Ko Ko Kyaw @ Ko Thant**
Email Address : thantkoko.kyaw@sembcorp.com
Phone : +95 9 798756742

